

UK duo Howard and Guy Lawrence.

Showcase

Drapery Solutions
Scenic Gauze

Disclosure performed their first UK tour in front of screens manufactured by J&C Joel.

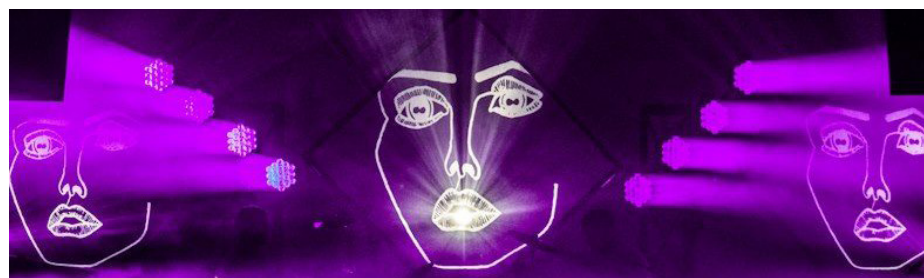
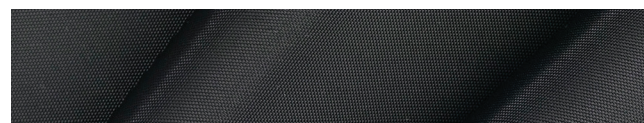
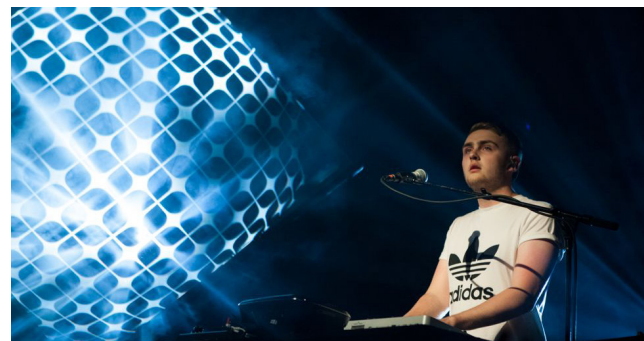
The electronic music duo went on their first UK tour following the release of their number one album Settle. UK duo Howard and Guy Lawrence mix and match a wide range of dance influences to come up with their own style of soulful, bass-moving sound.

J&C Joel manufactured eight screens made from black Scenic Gauze (SG002) and lined with white Scenic Gauze (SG001). The screens were created in a variety of sizes ranging from 1.267 m2 s to 1.967 m2 and all finished with a one-inch black loop Velcro around the edges of the material. The screens were stored in black PUFC Storage bags (SBP003) manufactured by J&C Joel.

The two shades of gauze were put together to form an excellent semi-transparent screen, creating a holographic image. Images were rear projected onto the screens which created a 3D Illusion and an outstanding optical effect.

Due to the elasticity of the fabric it would be difficult to get a regimented shape however J&C Joel developed a manufacturing method for Scenic Gauze which enabled them to create the screens. No matter how complex or intricate the job may seem J&C Joel's manufacturing team are experienced and creative enough to complete any job to the highest of standards.

Will Potts, Designer, said: "J&C Joel did an amazing job on this project. At first my design was going to be tricky if not impossible to accomplish to the standard required, with my specified fabrics and gauzes. But I thought 'If these guys can't do it no one can' they took this unique project on and did a great job."



8
screens

2 shades of
Scenic Gauze

3D
illusion