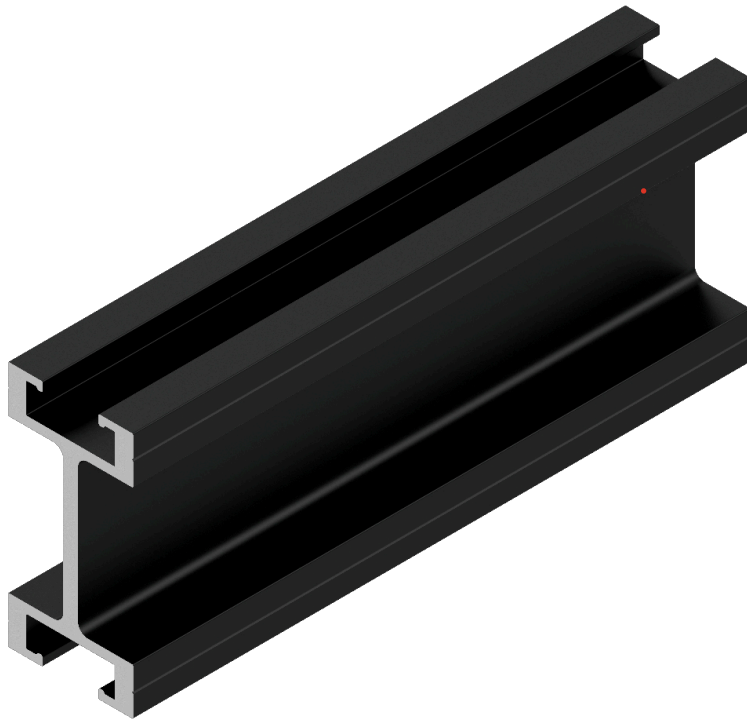


UniBeam Straight Track



Technical Details

Part No: UBM0101

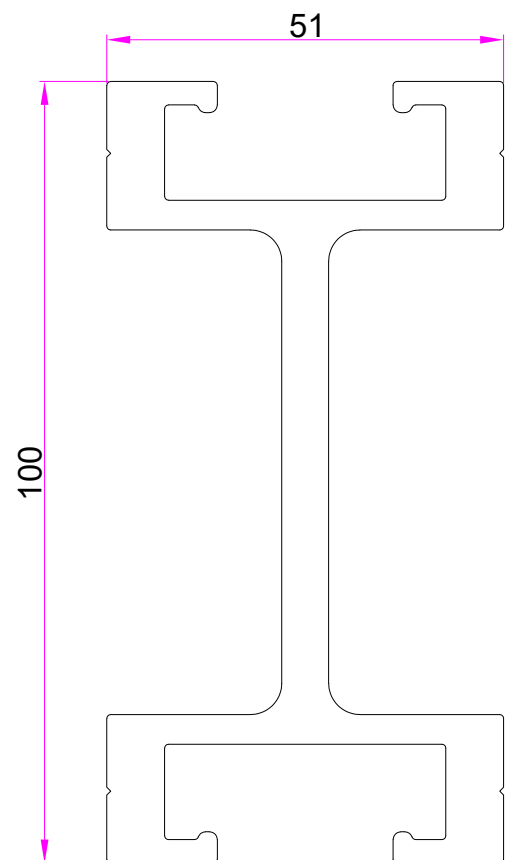
Weight: 3.441 kg per metre
WLL: See Triple E WLL Sheet

Material: Aluminium Extrusion
Finish: Black Anodised

UniBeam is for permanent installations of heavy duty curtains and scenery with a wide range of motors and cording methods.

The UniBeam track is an aluminium alloy extrusion, 100 mm deep x 51 mm wide. The lipped grooves located in the top and bottom of the track are joined by a thin vertical web and are designed to accept standard Unistrut channel nuts. These track sections are available in lengths of up to 6.1 m (20 feet).

The UBM0101 UniBeam track system has the same external dimensions as UniTrack so the running gear components are compatible with both systems.



+44 (0) 1959 570 333
www.triplee.ltd
info@triplee.ltd
[@tripleeltd](https://www.instagram.com/tripleeltd)

Equipment Engineered for Entertainment

